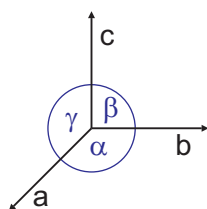
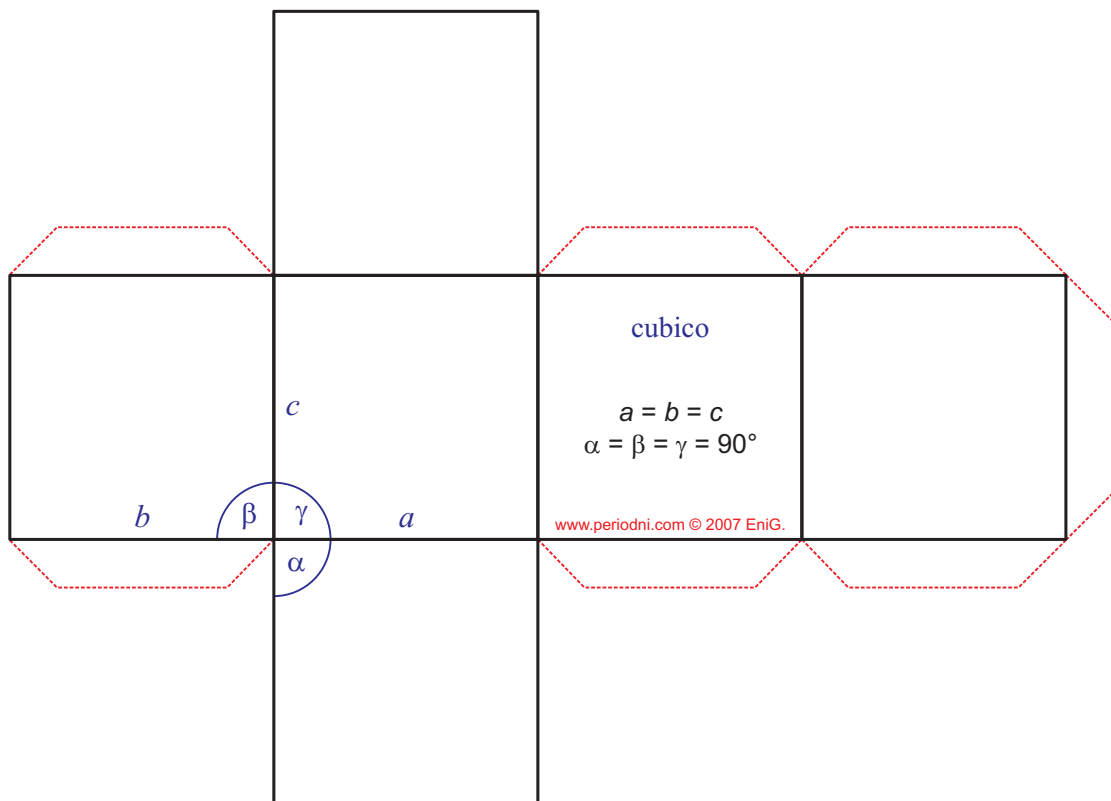


SISTEMA CRISTALLINO

cubico

$$a = b = c$$
$$\alpha = \beta = \gamma = 90^\circ$$



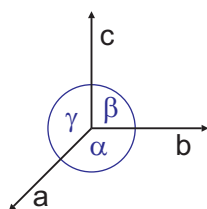
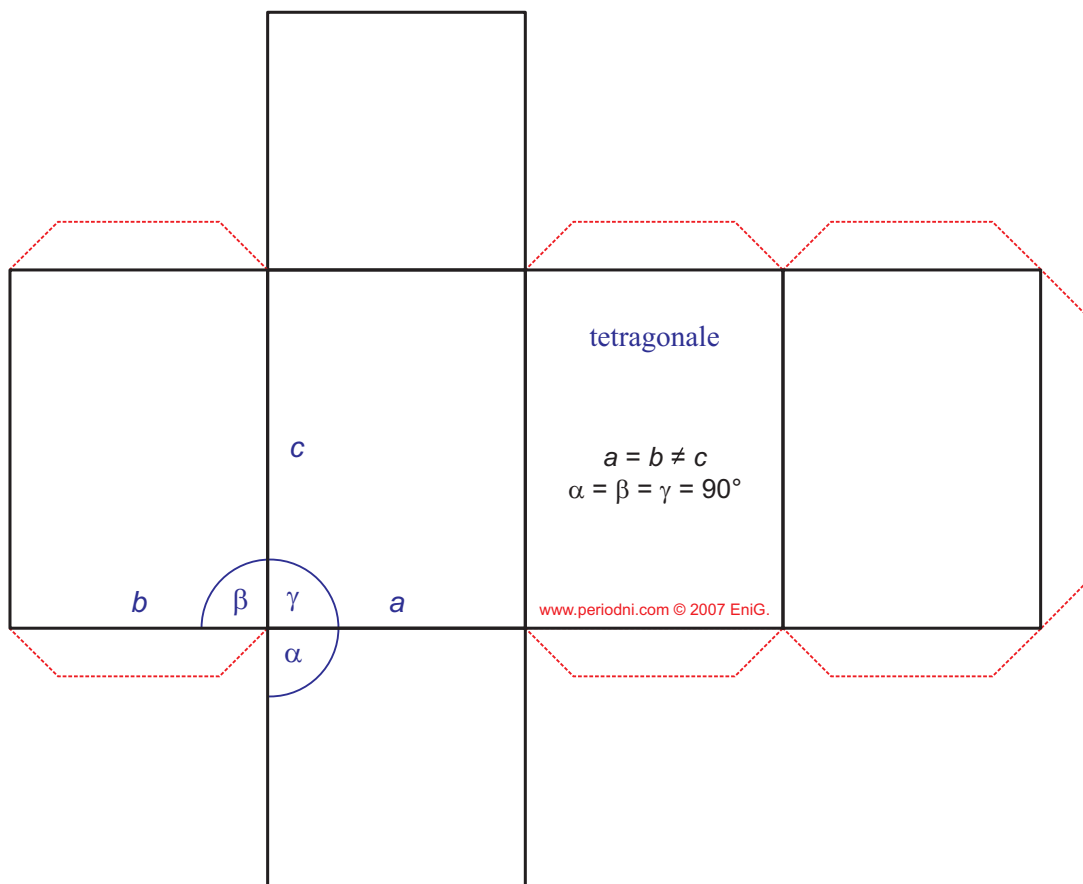
<http://www.periodni.com>

Copyright © 2007 by Eni Generalić

SISTEMA CRISTALLINO

tetragonale

$$a = b \neq c$$
$$\alpha = \beta = \gamma = 90^\circ$$



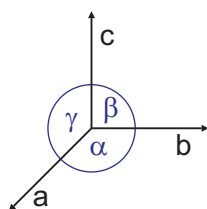
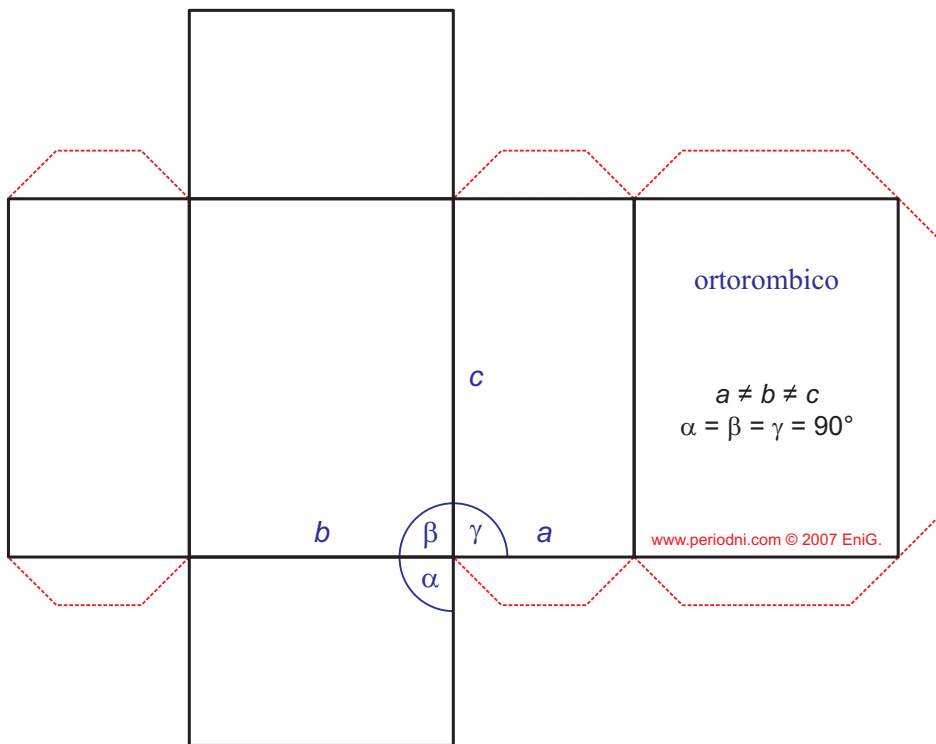
<http://www.periodni.com>

Copyright © 2007 by Eni Generalić

SISTEMA CRISTALLINO

ortorombico

$$a \neq b \neq c$$
$$\alpha = \beta = \gamma = 90^\circ$$

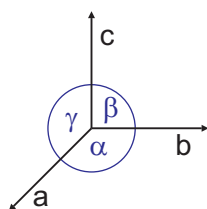
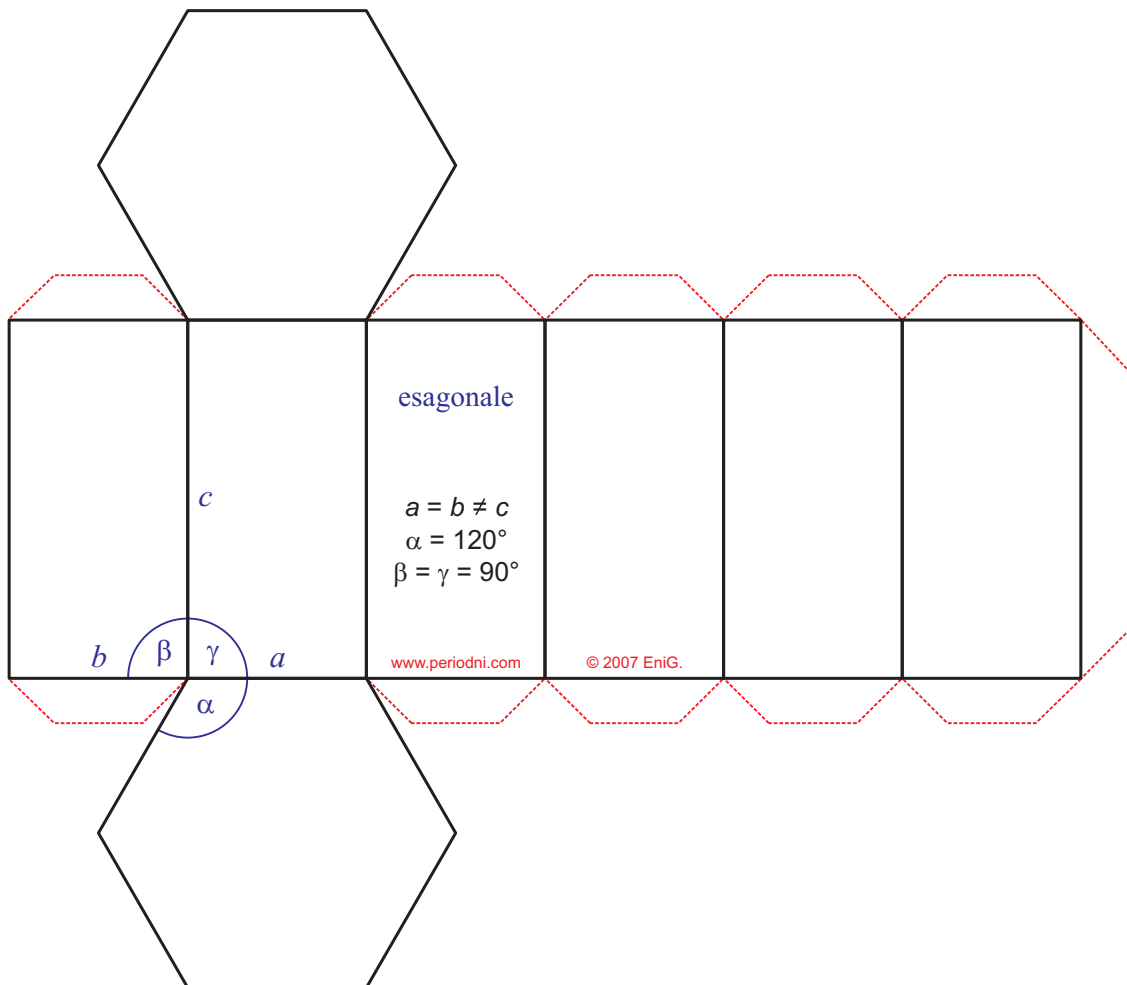


<http://www.periodni.com>

SISTEMA CRISTALLINO

esagonale

$$a = b \neq c$$
$$\alpha = 120^\circ ; \beta = \gamma = 90^\circ$$



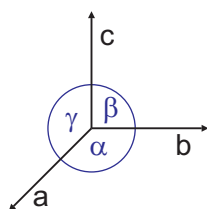
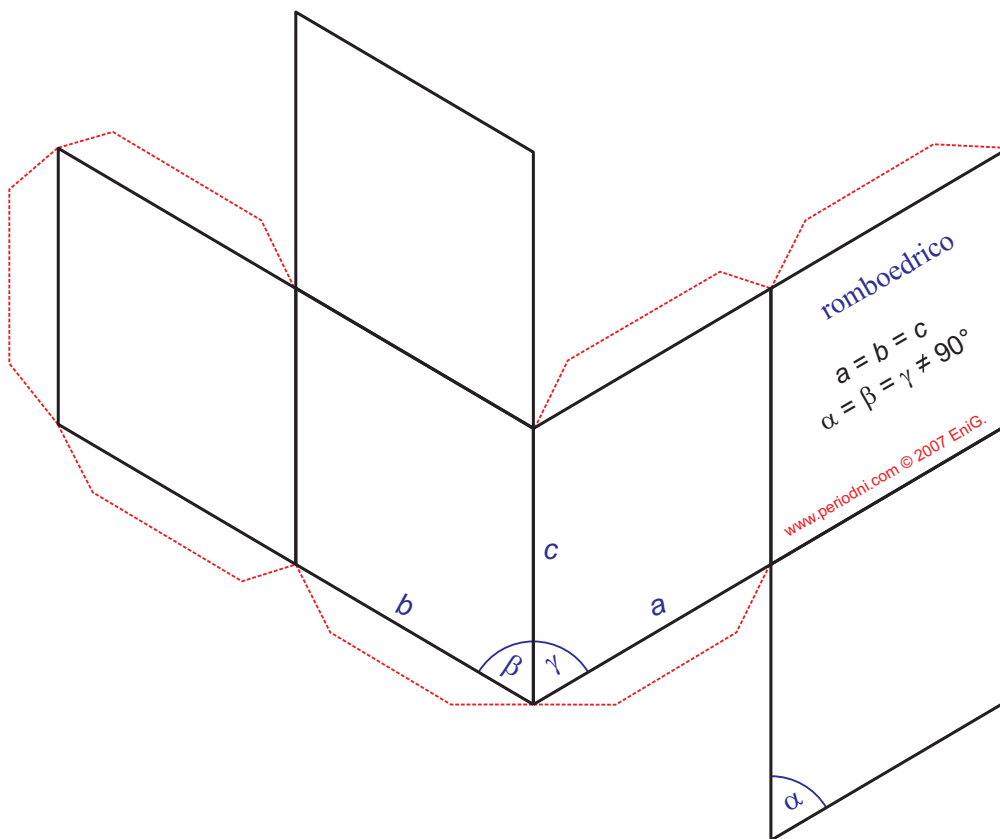
<http://www.periodni.com>

Copyright © 2007 by Eni Generalić

SISTEMA CRISTALLINO

romboedrico

$$a = b = c$$
$$\alpha = \beta = \gamma \neq 90^\circ$$



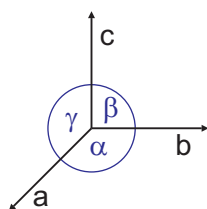
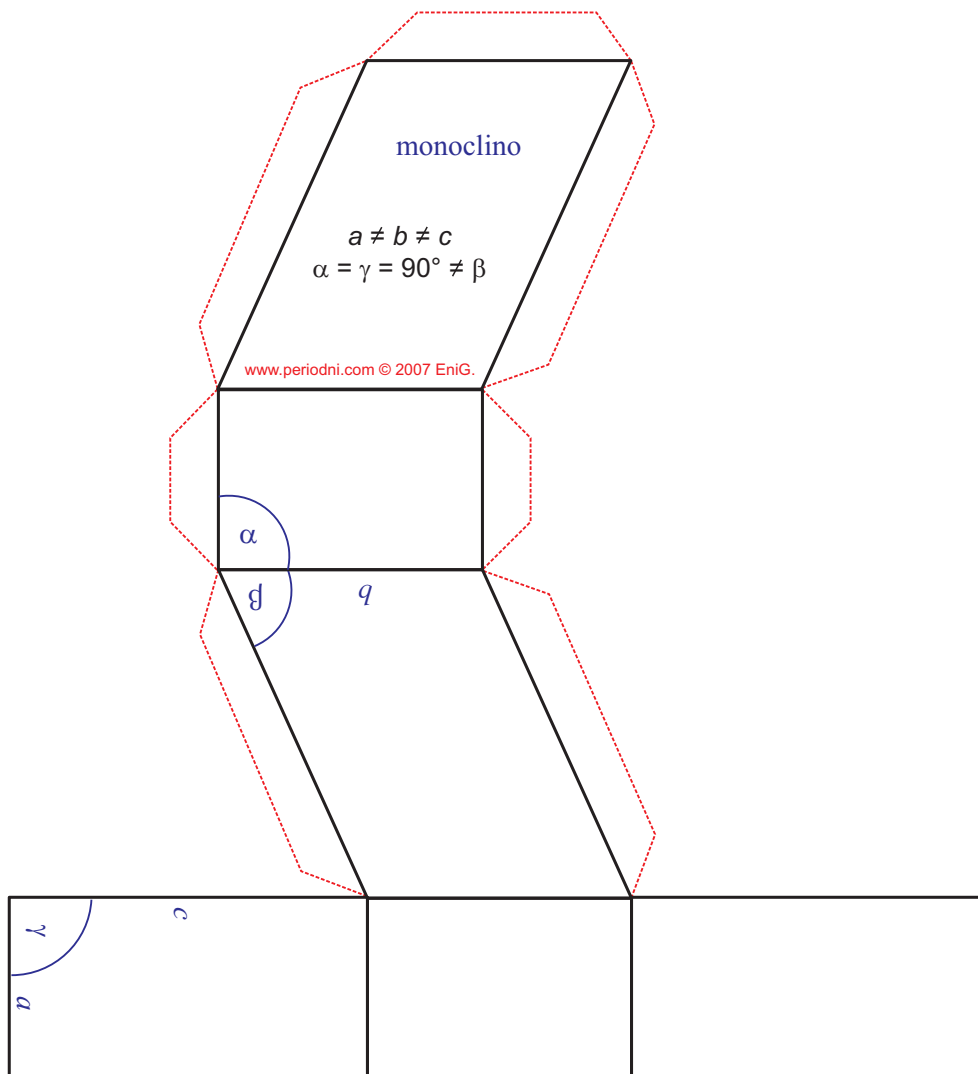
<http://www.periodni.com>

Copyright © 2007 by Eni Generalić

SISTEMA CRISTALLINO

monoclino

$$a \neq b \neq c$$
$$\alpha = \gamma = 90^\circ \neq \beta$$

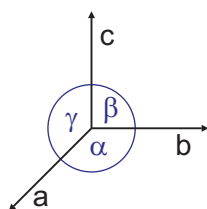
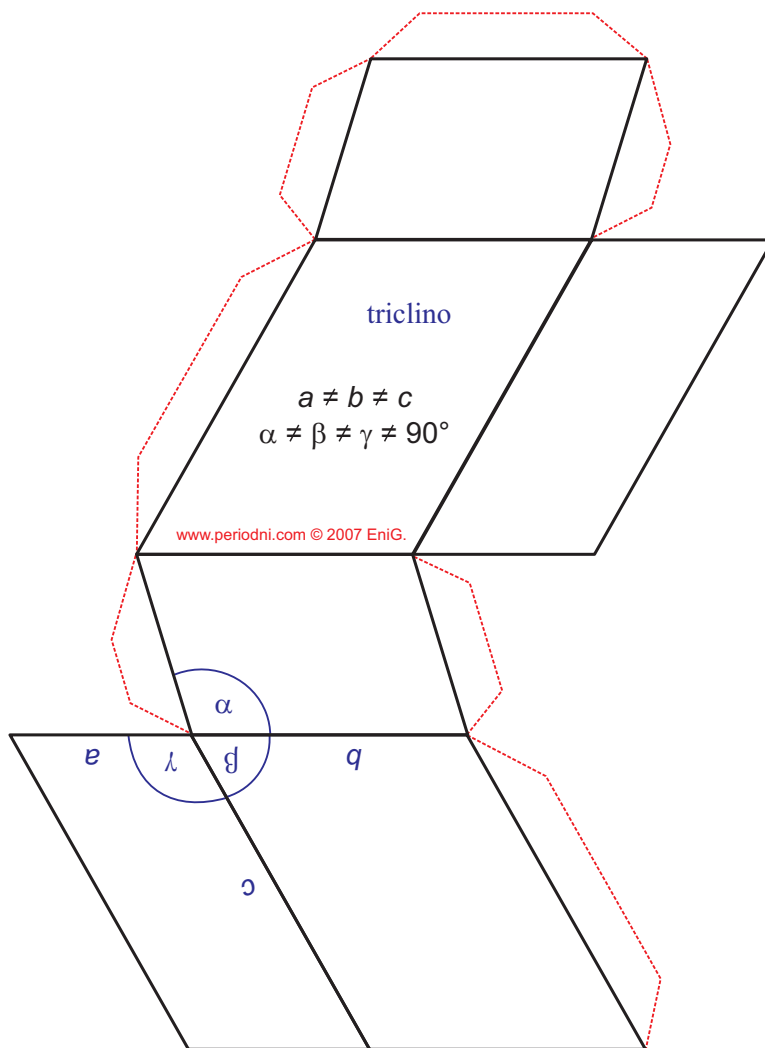


<http://www.periodni.com>

SISTEMA CRISTALLINO

triclino

$$a \neq b \neq c$$
$$\alpha \neq \beta \neq \gamma \neq 90^\circ$$



<http://www.periodni.com>

Copyright © 2007 by Eni Generalić