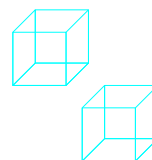
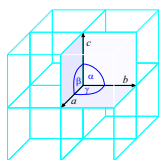
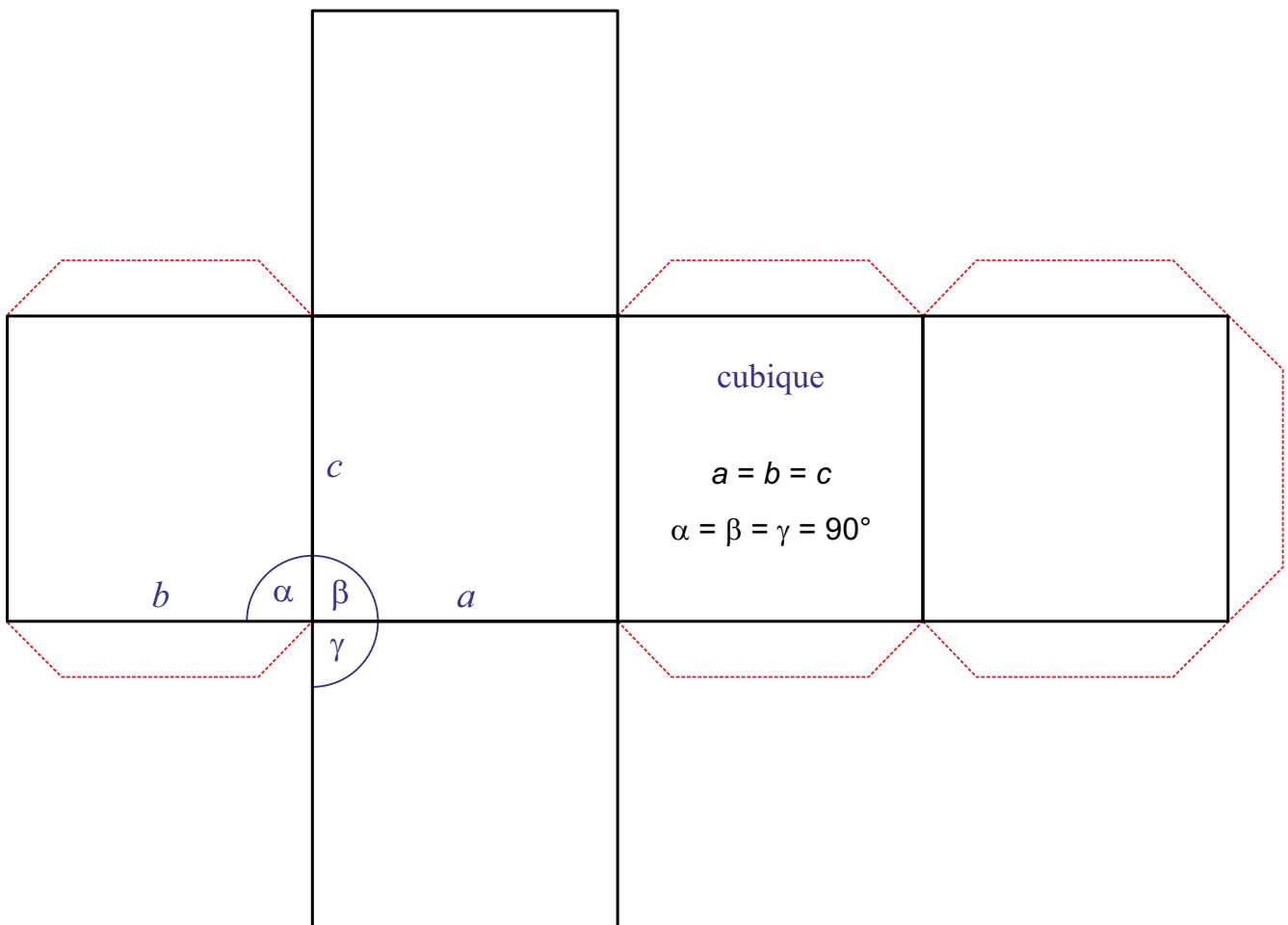


# SYSTÈME CRISTALLIN

## cubique

$$a = b = c$$

$$\alpha = \beta = \gamma = 90^\circ$$

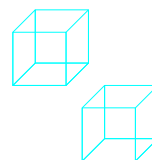
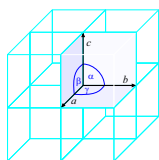
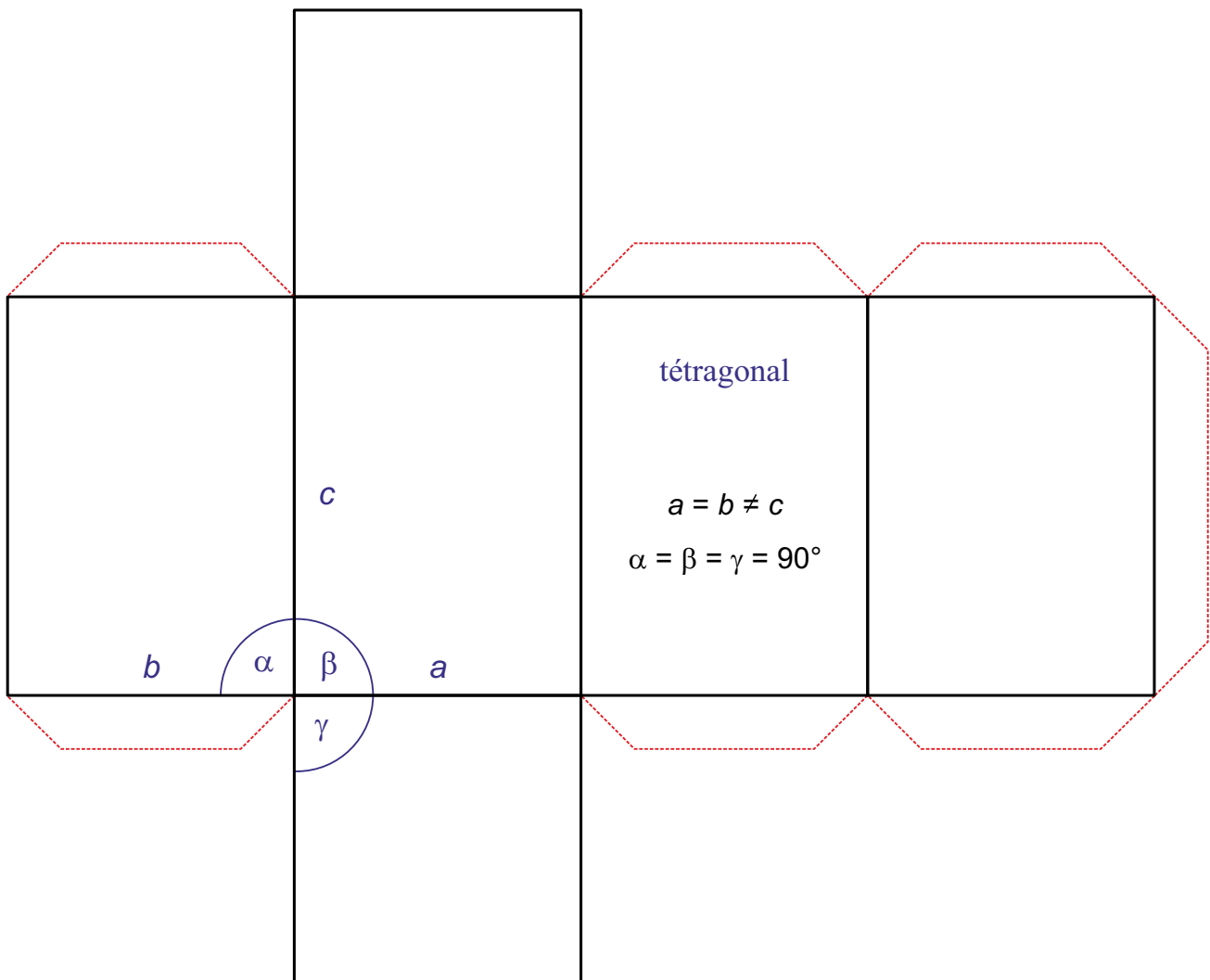


# SYSTÈME CRISTALLIN

## tétragonal

$$a = b \neq c$$

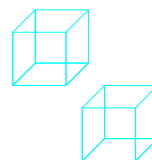
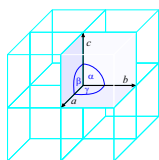
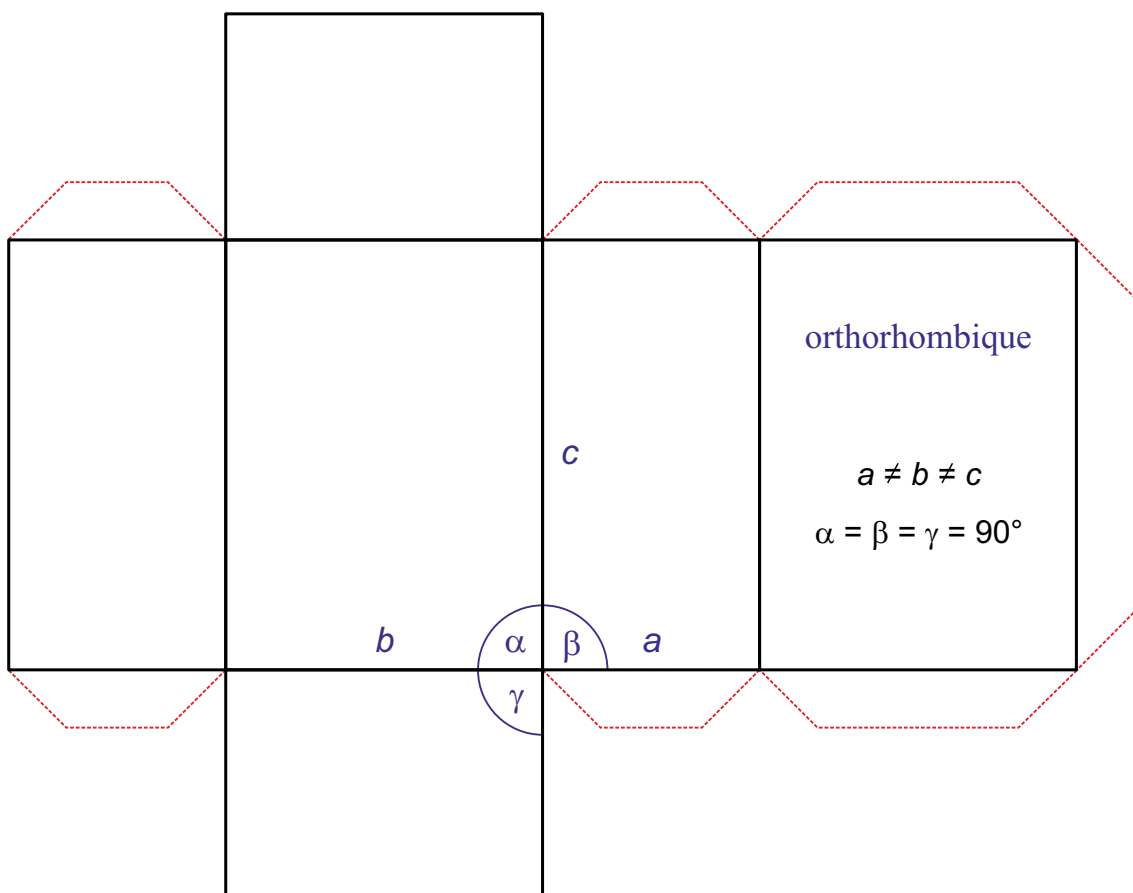
$$\alpha = \beta = \gamma = 90^\circ$$



# SYSTÈME CRISTALLIN orthorhombique

$$a \neq b \neq c$$

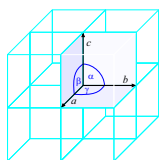
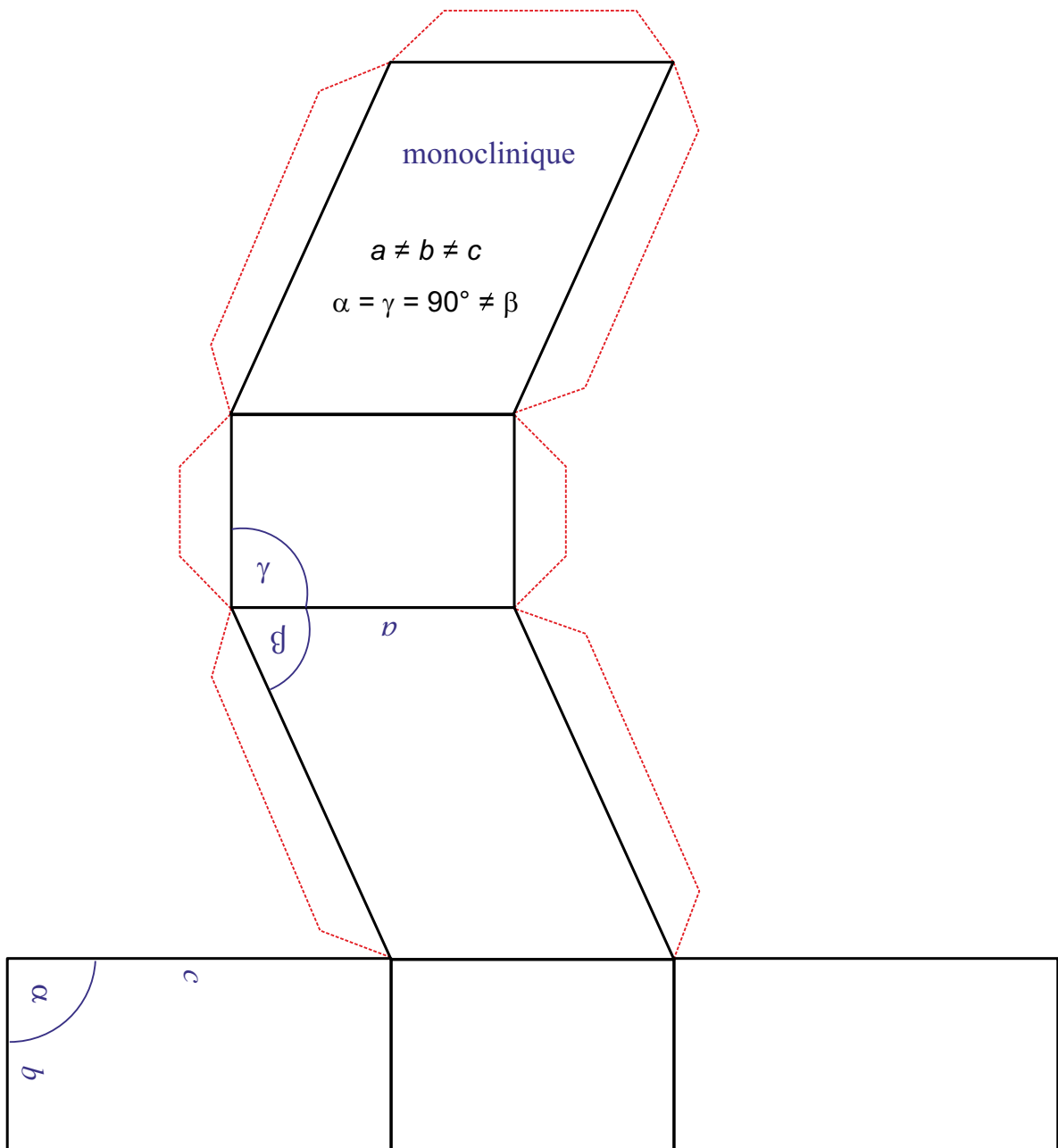
$$\alpha = \beta = \gamma = 90^\circ$$



# SYSTÈME CRISTALLIN monoclinique

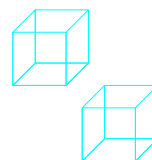
$$a \neq b \neq c$$

$$\alpha = \gamma = 90^\circ \neq \beta$$



<http://www.periodni.com>

Copyright © 2016 by Eni Generalic

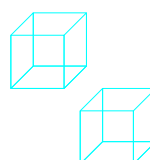
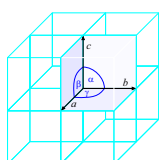
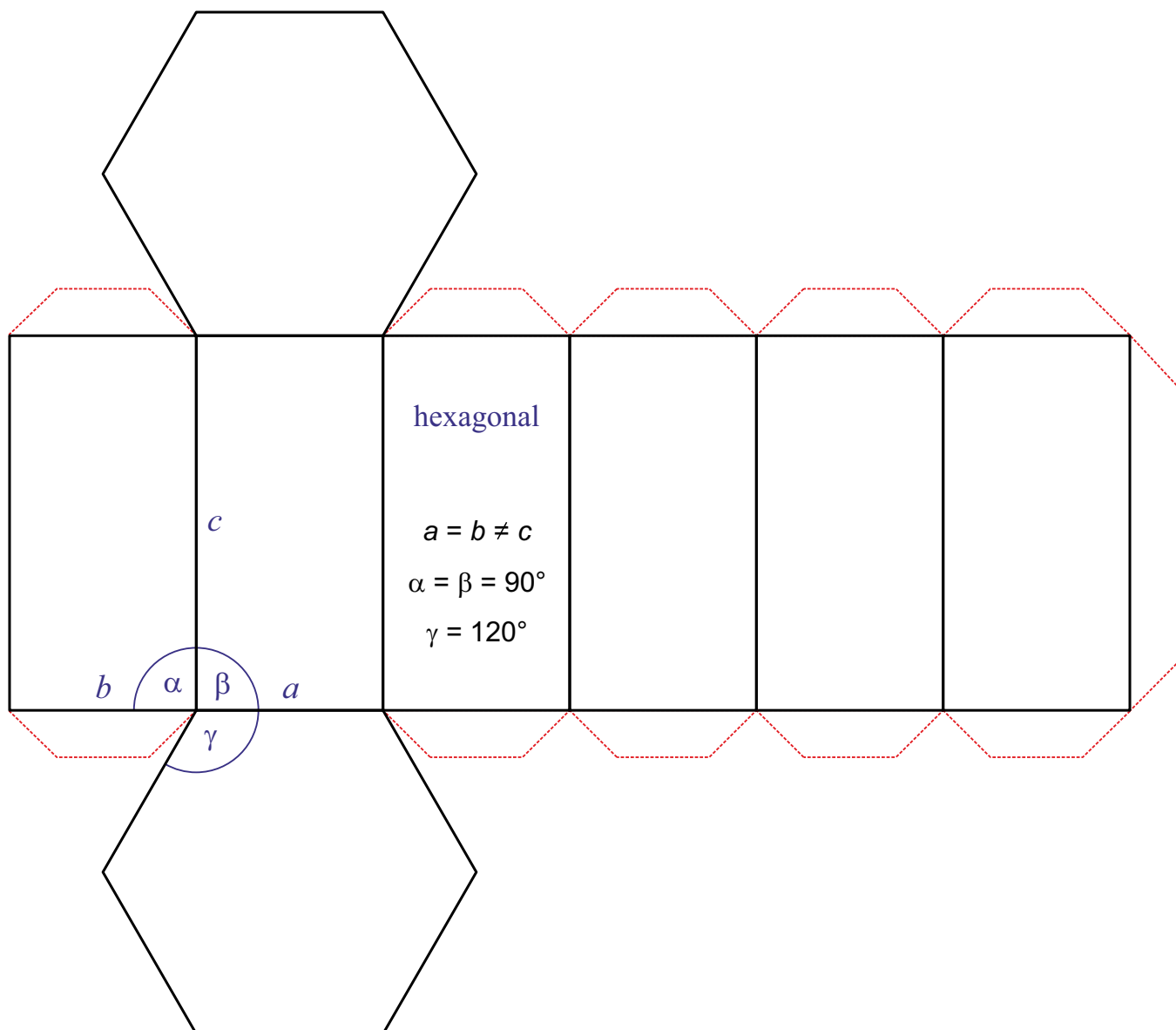


# SYSTÈME CRISTALLIN

## hexagonal

$$a = b \neq c$$

$$\alpha = \beta = 90^\circ; \gamma = 120^\circ$$

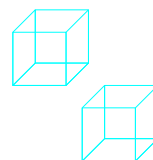
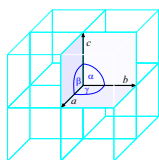
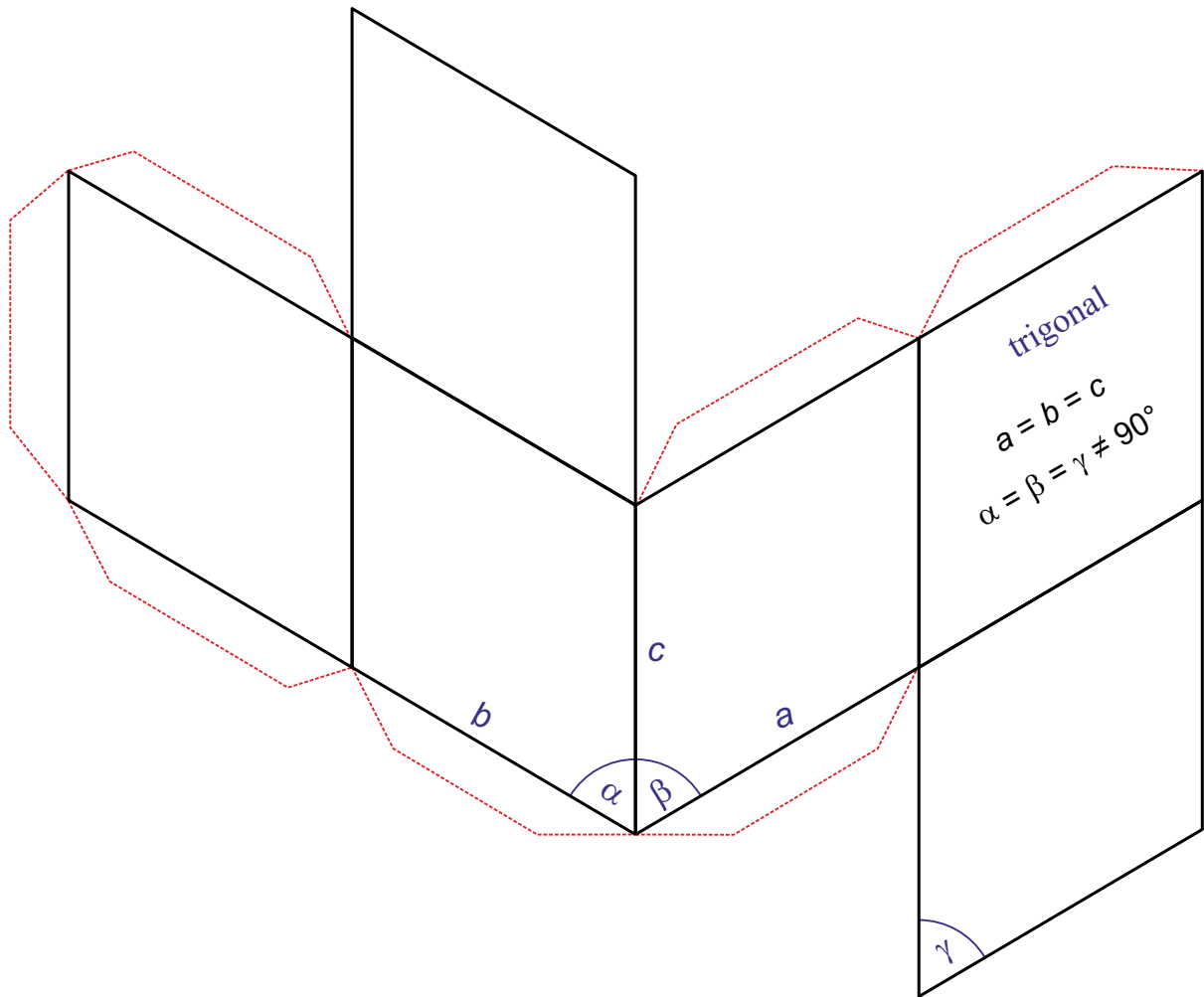


# SYSTÈME CRISTALLIN

trigonal

$$a = b = c$$

$$\alpha = \beta = \gamma \neq 90^\circ$$

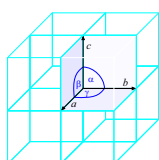
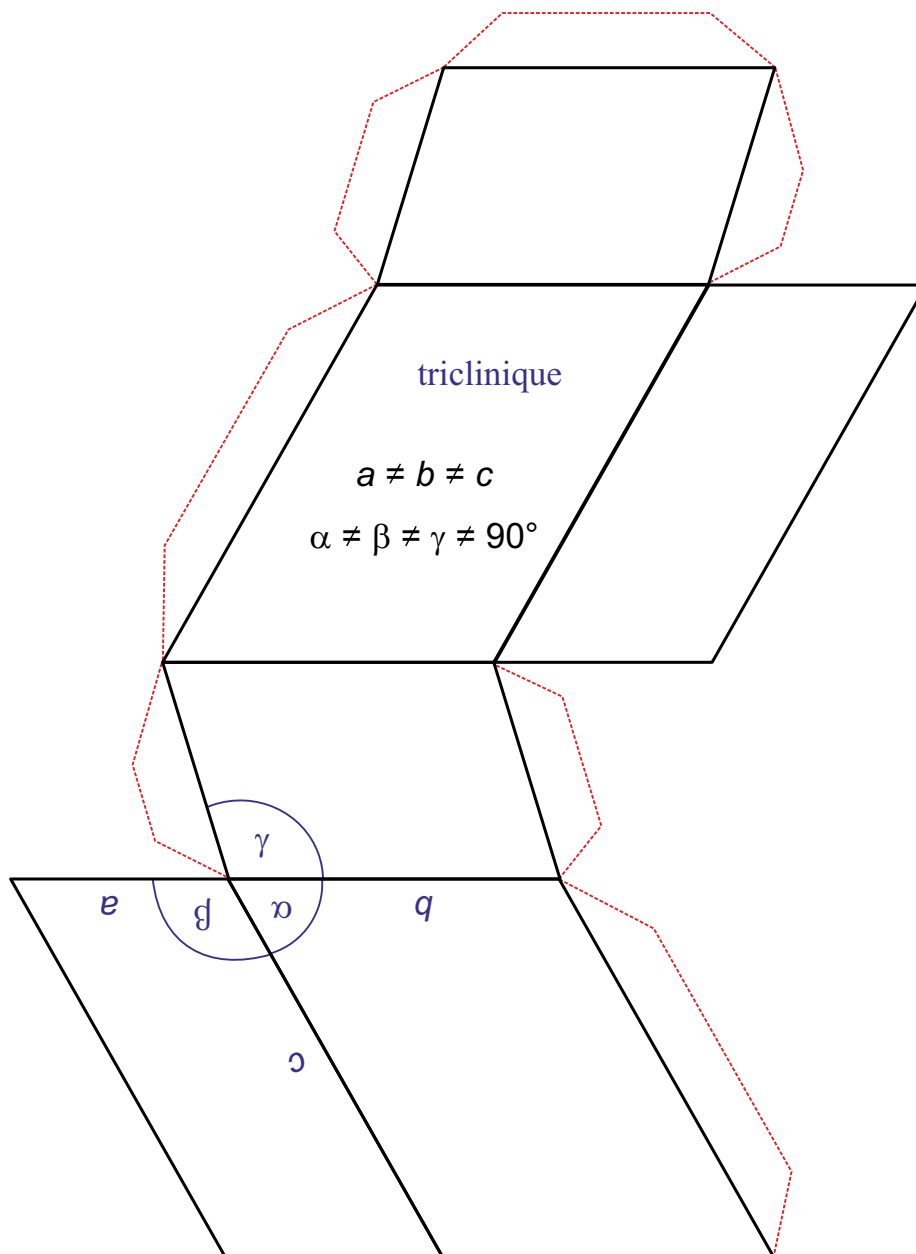


# SYSTÈME CRISTALLIN

## triclinique

$$a \neq b \neq c$$

$$\alpha \neq \beta \neq \gamma \neq 90^\circ$$



<http://www.periodni.com>

Copyright © 2016 by Eni Generalic

