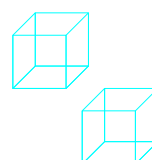
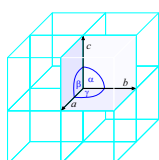
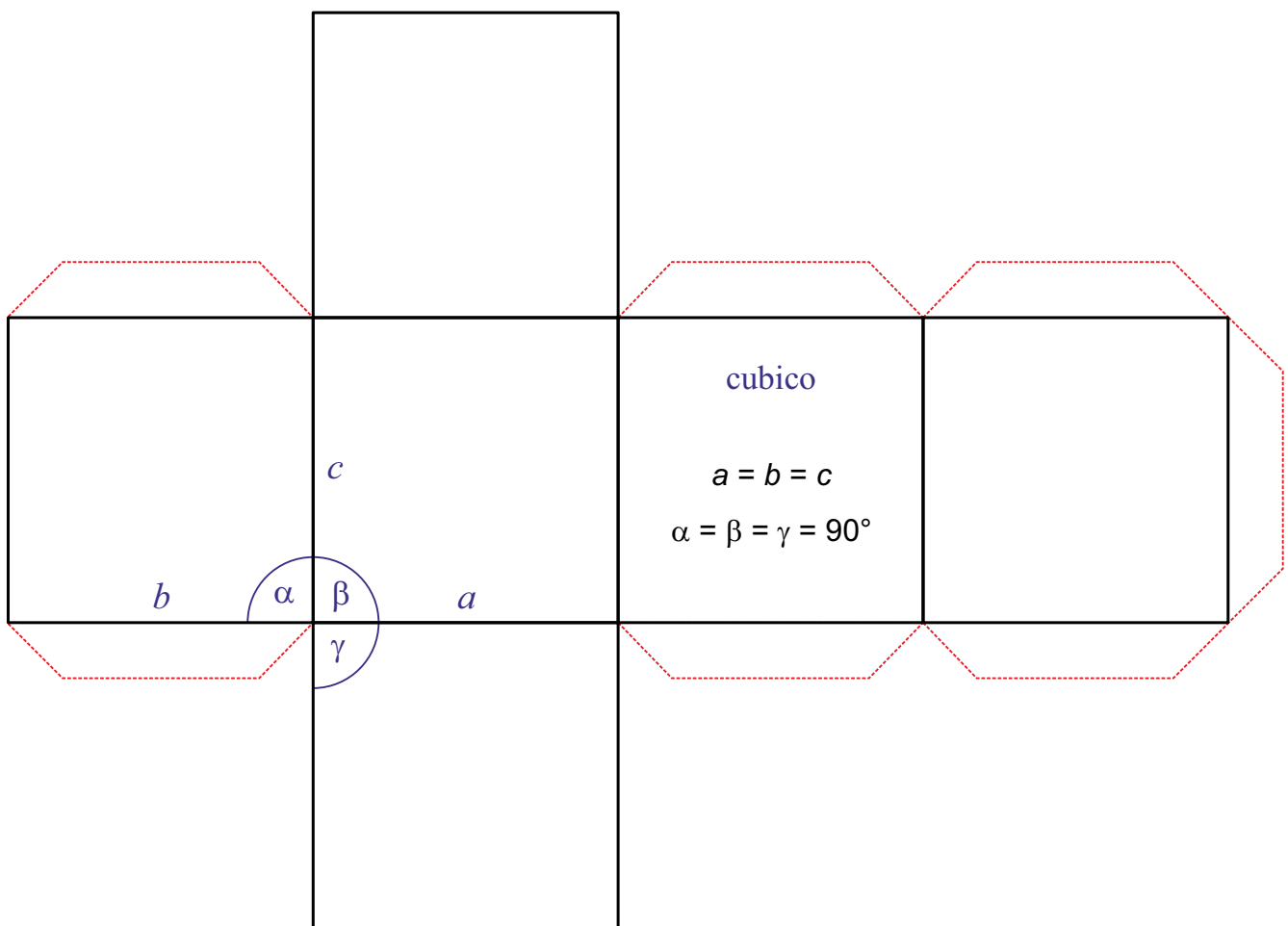


# SISTEMA CRISTALLINO

cubico

$$a = b = c$$

$$\alpha = \beta = \gamma = 90^\circ$$

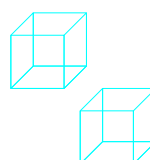
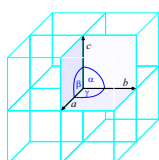
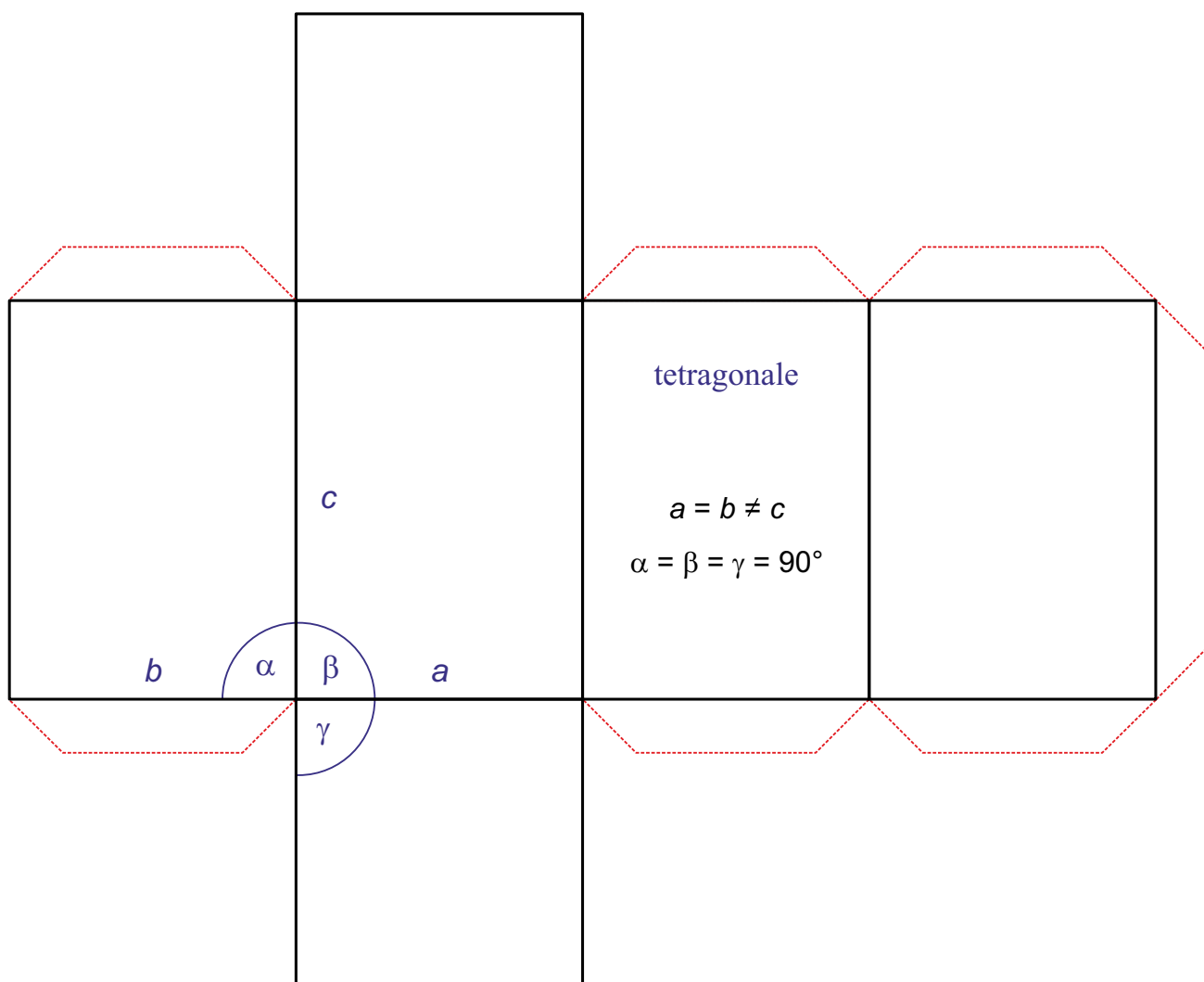


# SISTEMA CRISTALLINO

## tetragonale

$$a = b \neq c$$

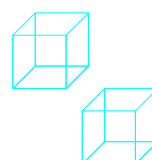
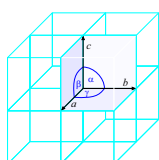
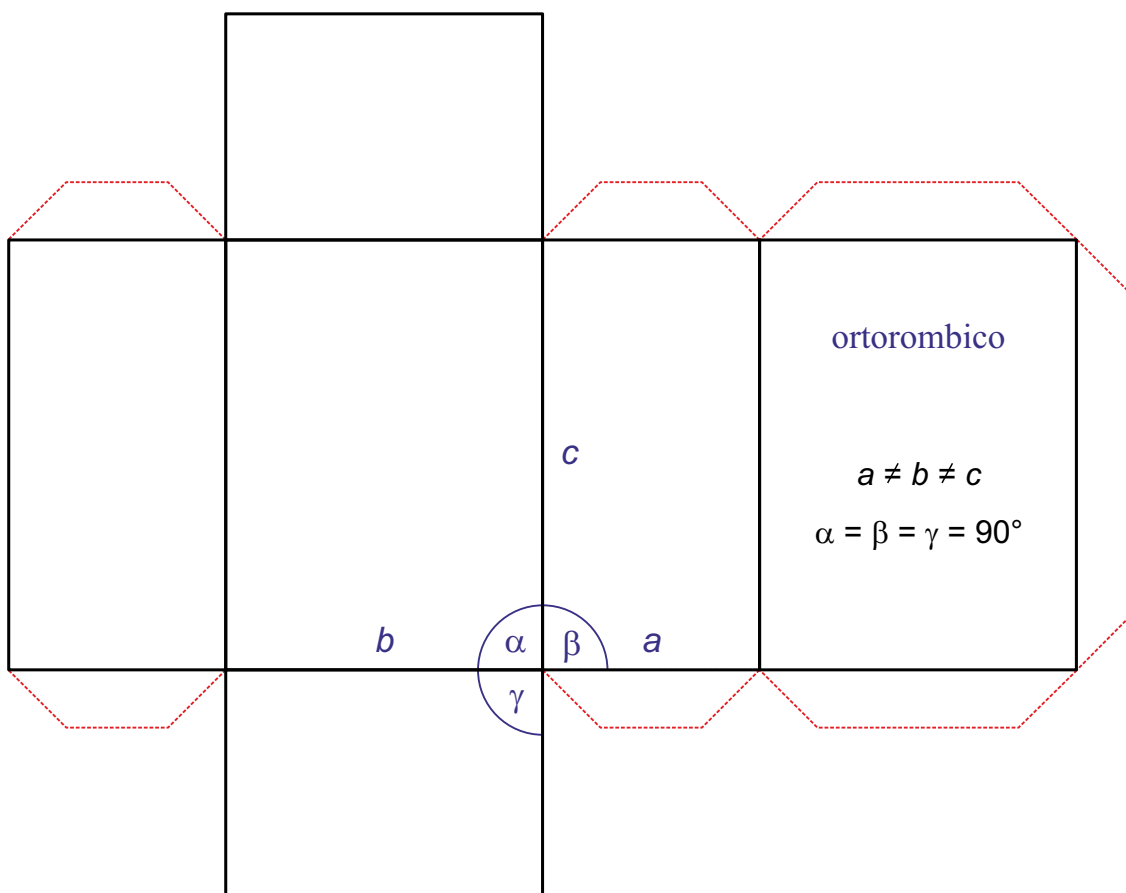
$$\alpha = \beta = \gamma = 90^\circ$$



# SISTEMA CRISTALLINO ortorombico

$$a \neq b \neq c$$

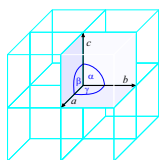
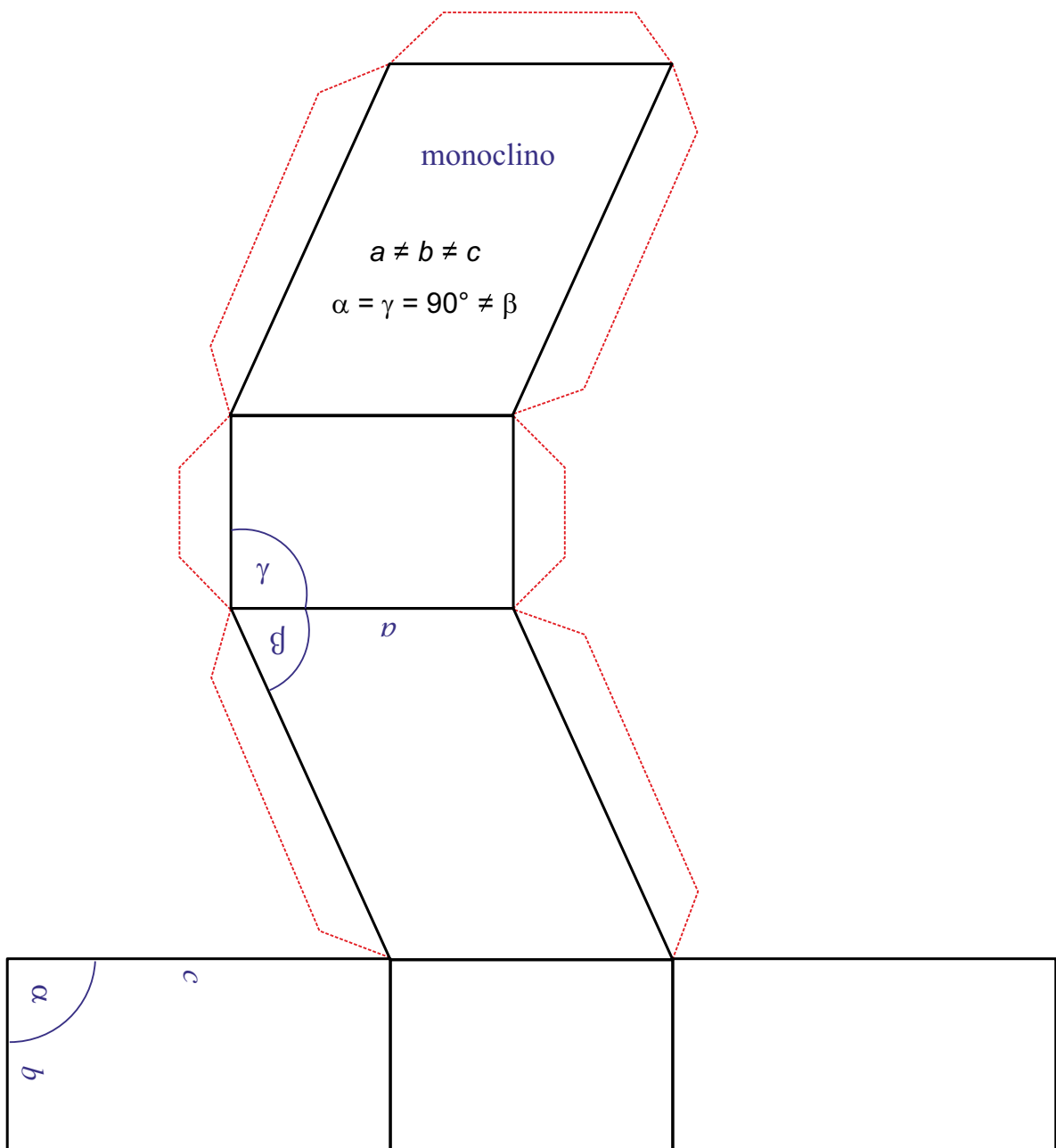
$$\alpha = \beta = \gamma = 90^\circ$$



# SISTEMA CRISTALLINO monoclinico

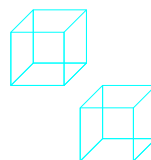
$$a \neq b \neq c$$

$$\alpha = \gamma = 90^\circ \neq \beta$$



<http://www.periodni.com>

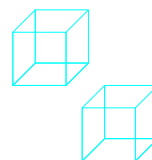
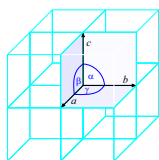
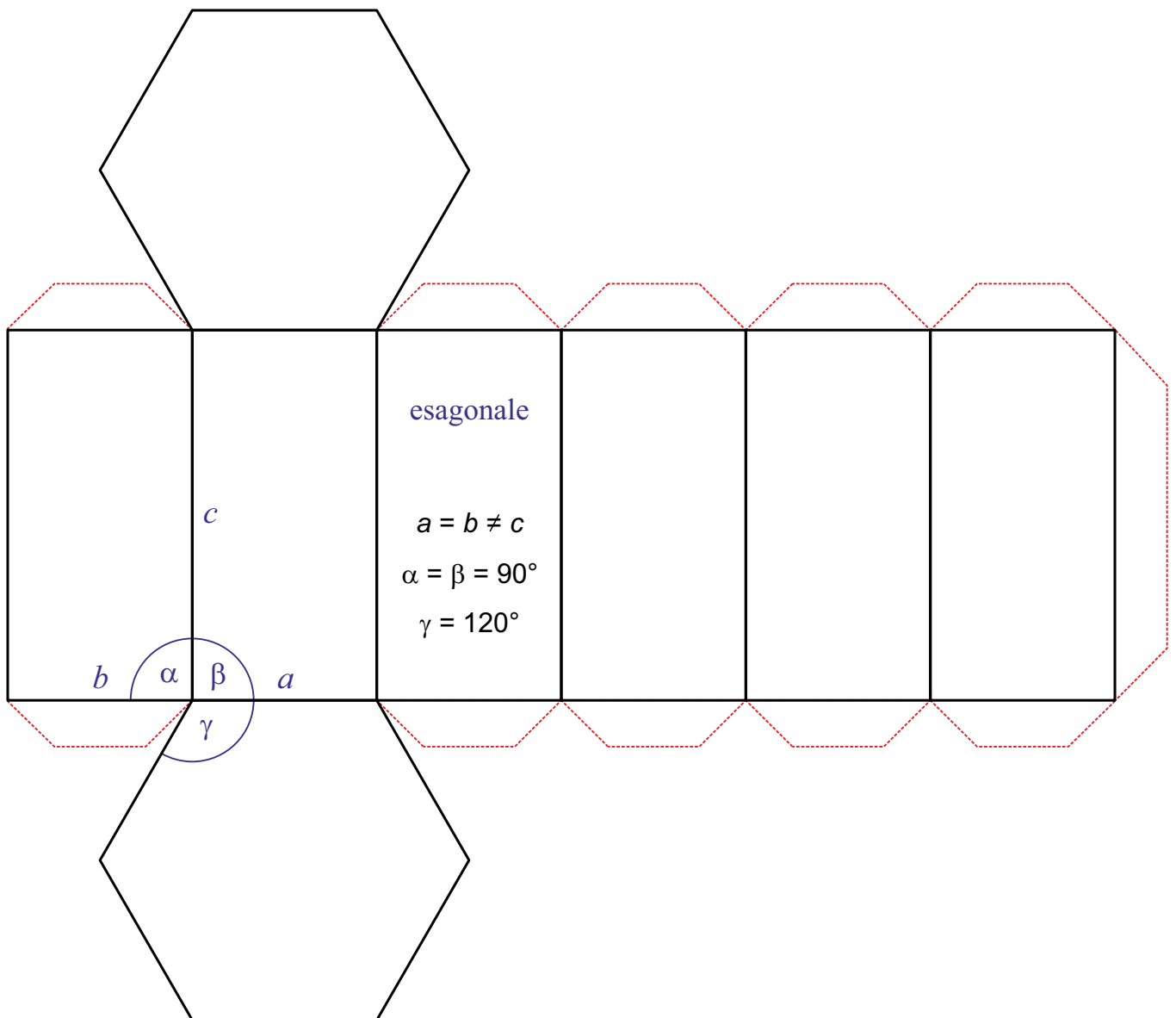
Copyright © 2016 by Eni Generalic



# SISTEMA CRISTALLINO esagonale

$$a = b \neq c$$

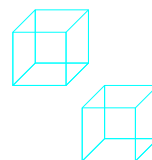
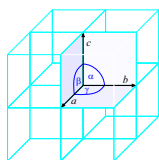
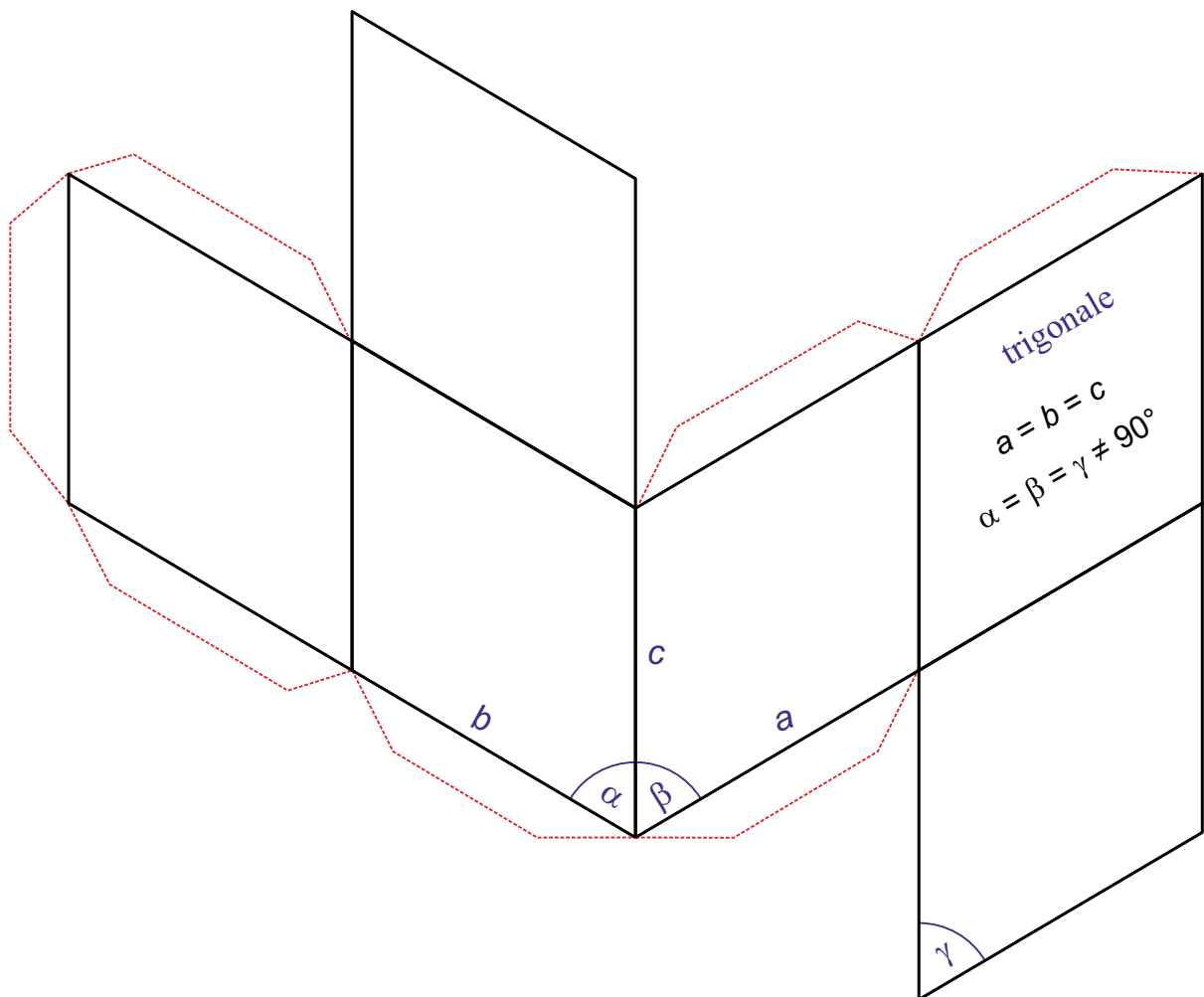
$$\alpha = \beta = 90^\circ; \gamma = 120^\circ$$



# SISTEMA CRISTALLINO trigonale

$$a = b = c$$

$$\alpha = \beta = \gamma \neq 90^\circ$$



# SISTEMA CRISTALLINO

## triclino

$$a \neq b \neq c$$

$$\alpha \neq \beta \neq \gamma \neq 90^\circ$$

