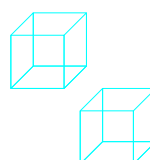
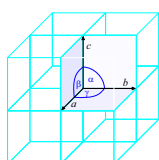
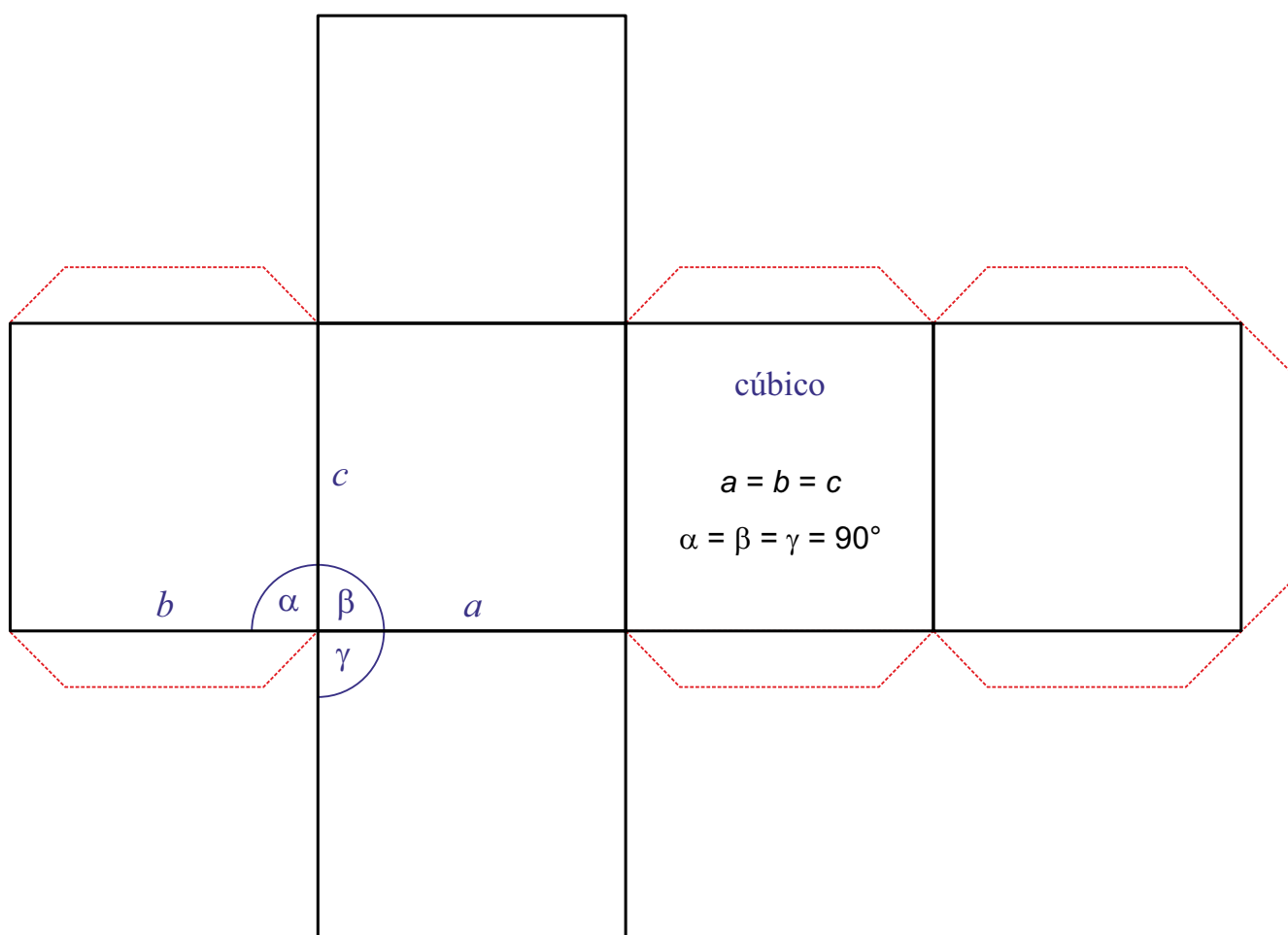


# SISTEMA CRISTALINO

cúbico

$$a = b = c$$

$$\alpha = \beta = \gamma = 90^\circ$$

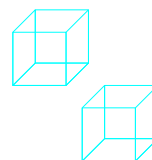
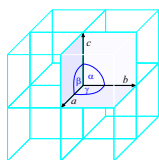
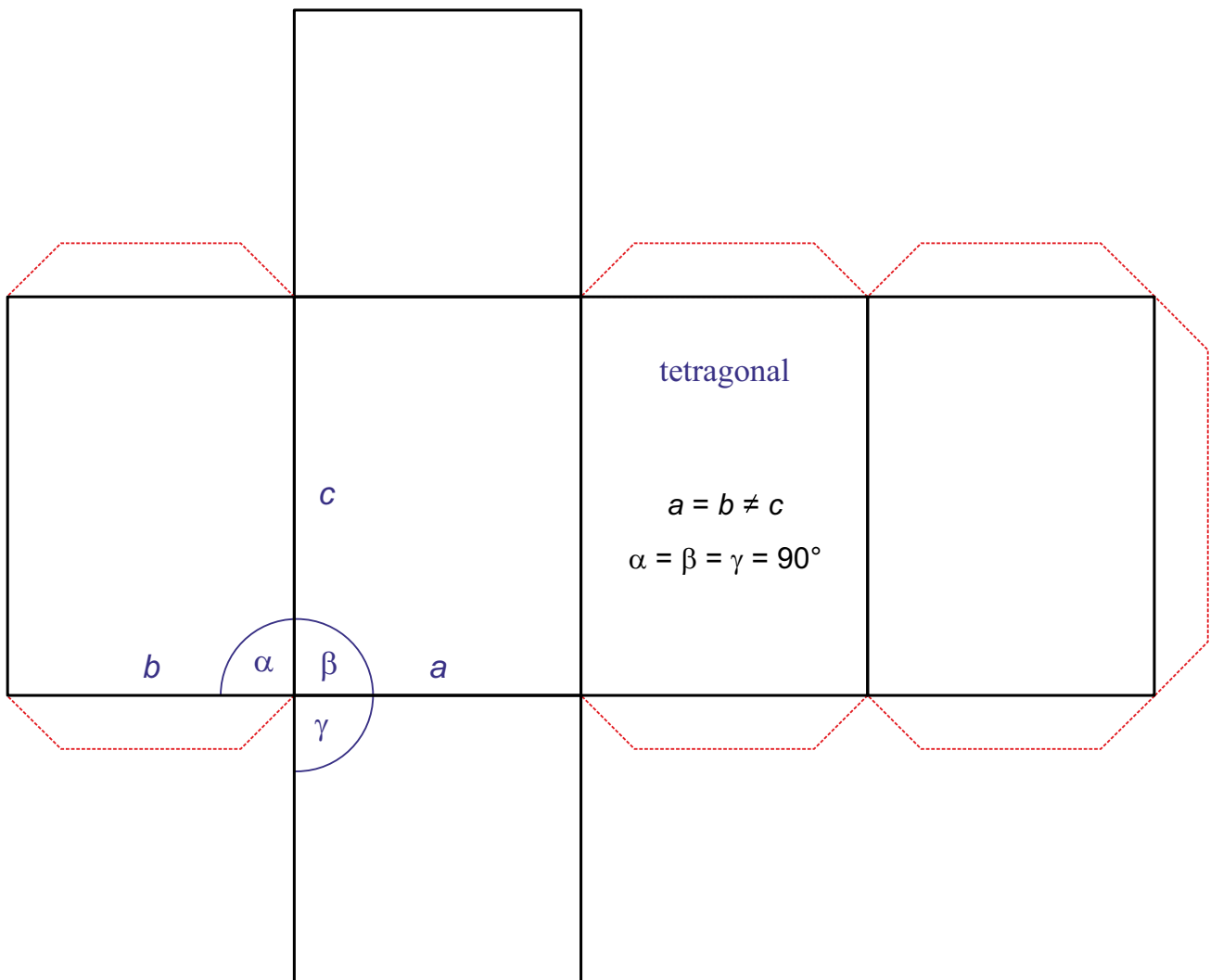


# SISTEMA CRISTALINO

## tetragonal

$$a = b \neq c$$

$$\alpha = \beta = \gamma = 90^\circ$$

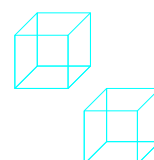
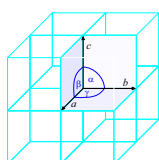
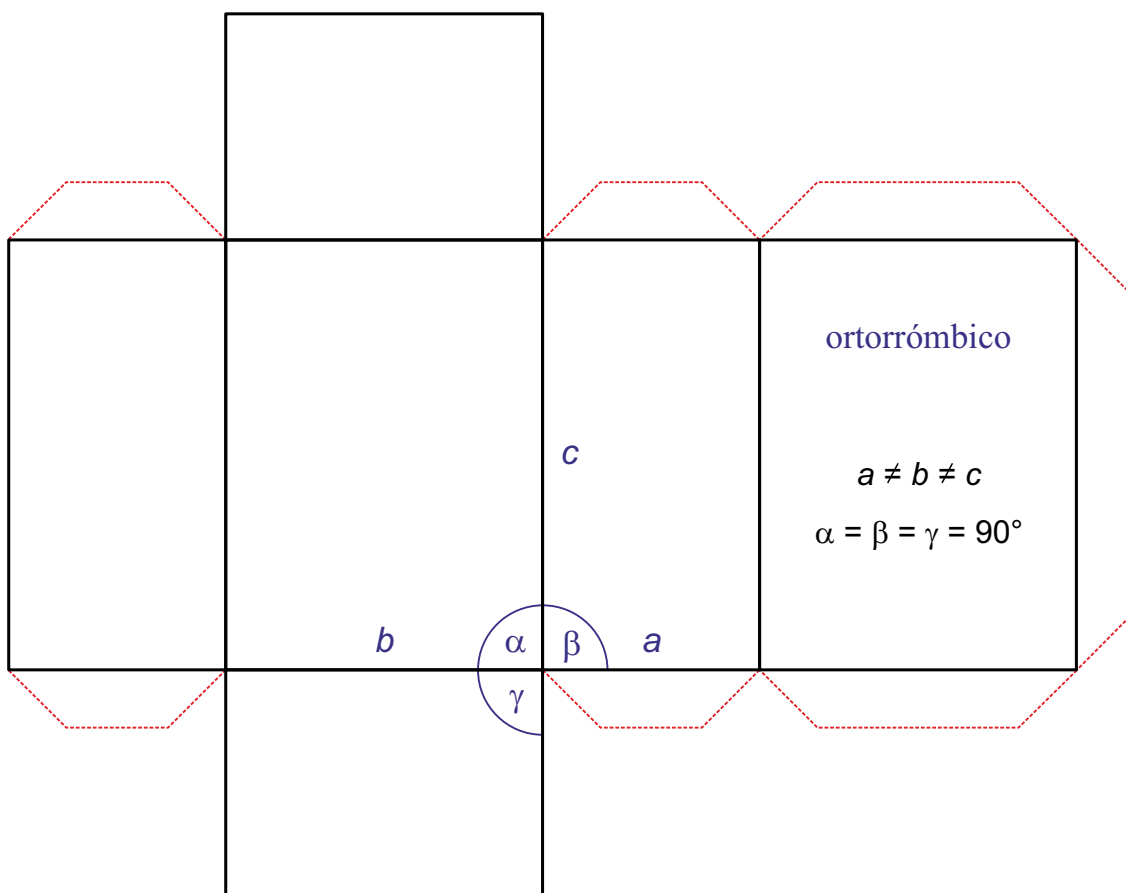


# SISTEMA CRISTALINO

## ortorrómbico

$$a \neq b \neq c$$

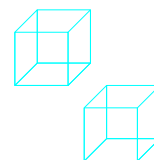
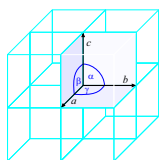
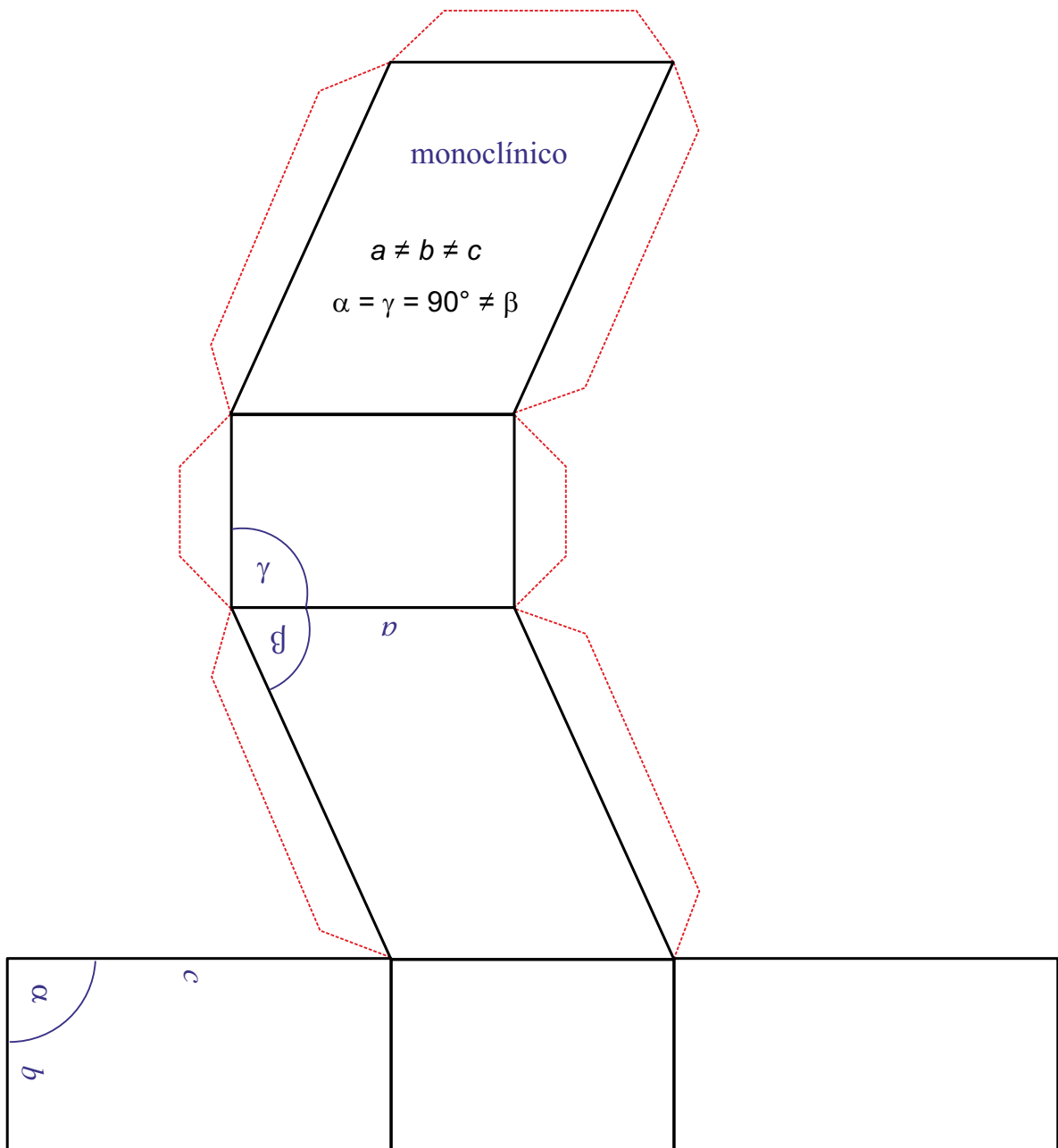
$$\alpha = \beta = \gamma = 90^\circ$$



# SISTEMA CRISTALINO monoclínico

$$a \neq b \neq c$$

$$\alpha = \gamma = 90^\circ \neq \beta$$

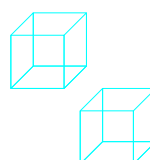
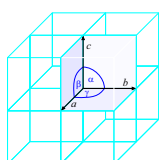
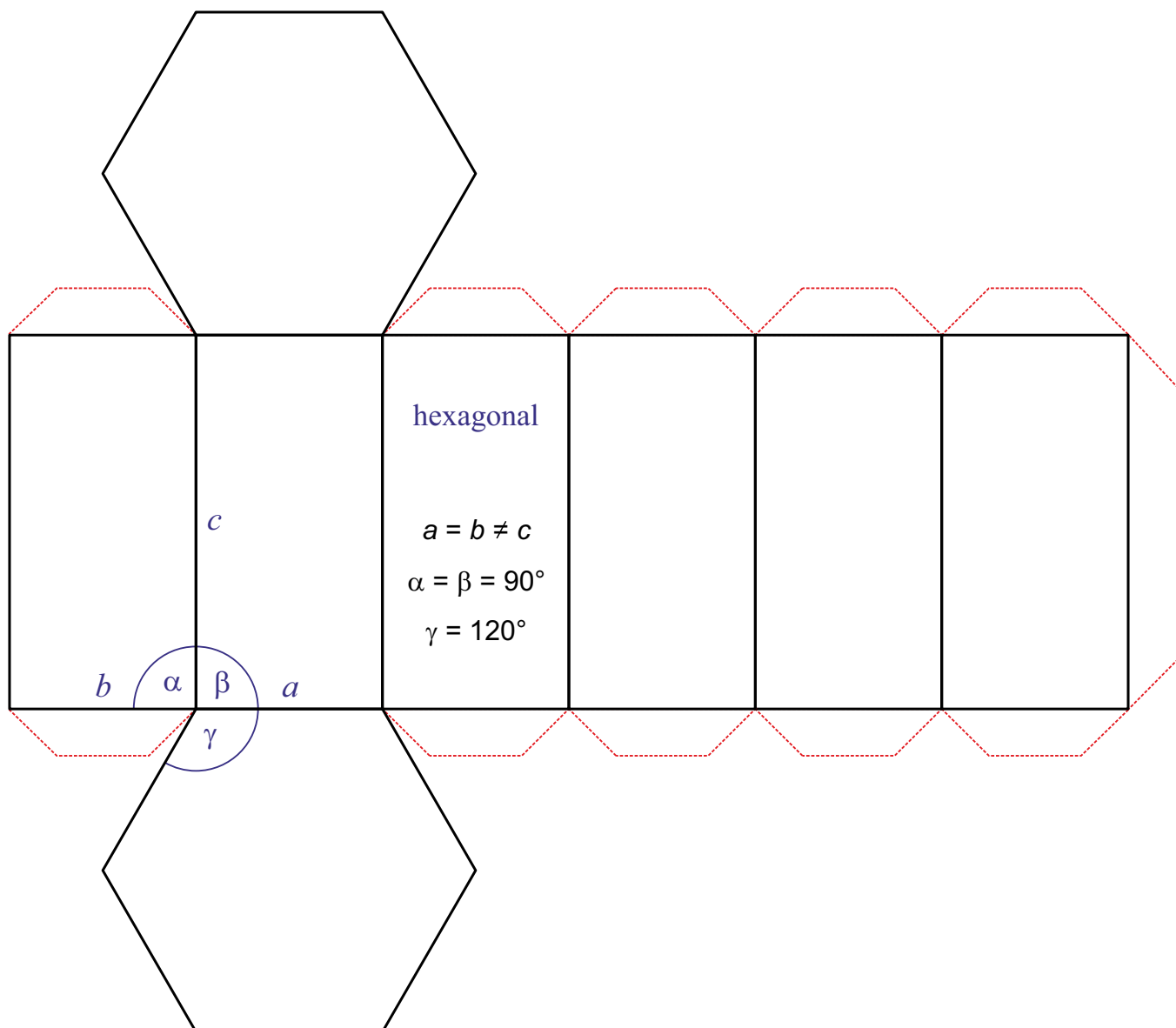


# SISTEMA CRISTALINO

## hexagonal

$$a = b \neq c$$

$$\alpha = \beta = 90^\circ; \gamma = 120^\circ$$

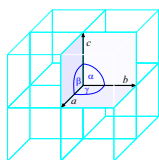
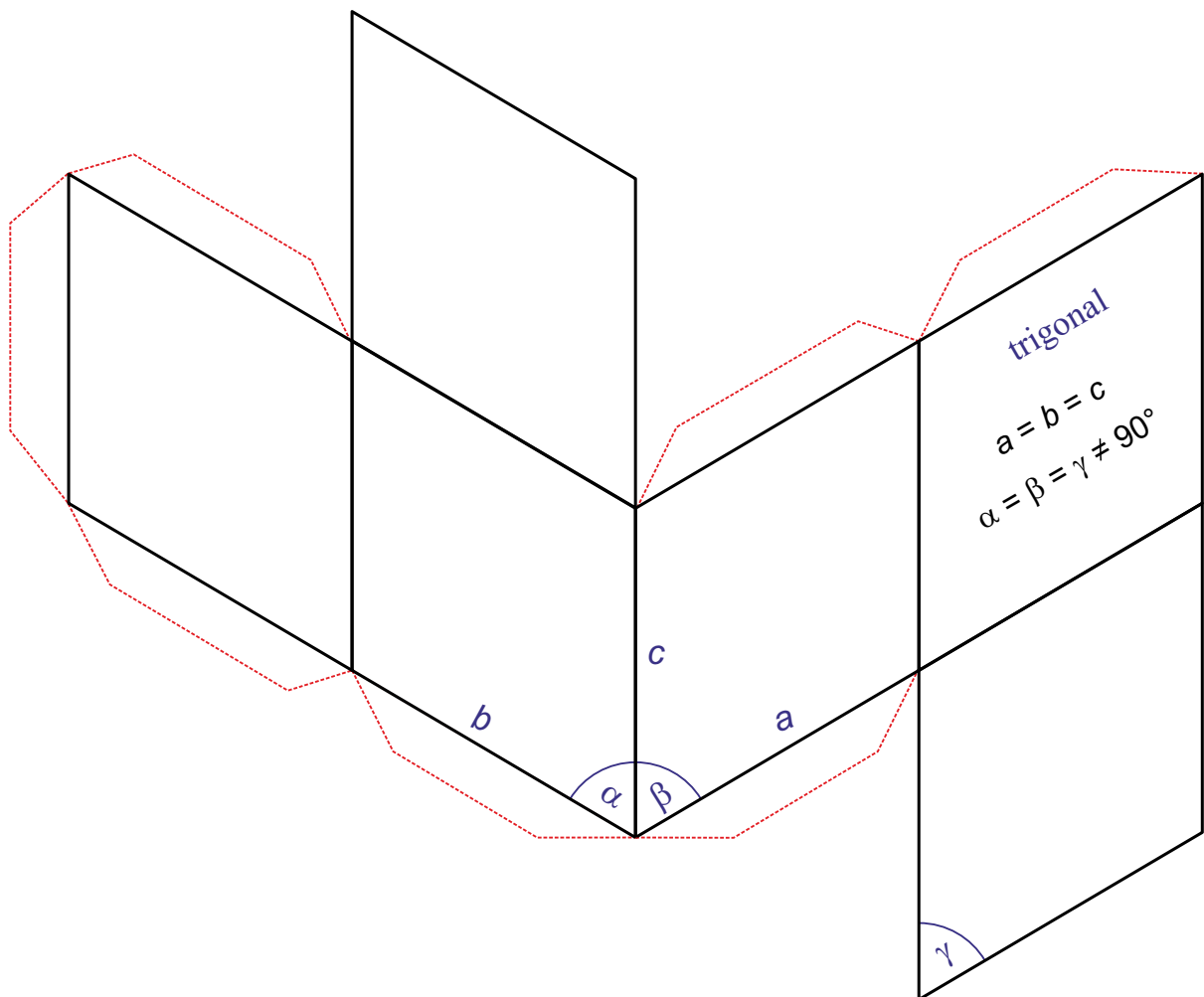


# SISTEMA CRISTALINO

trigonal

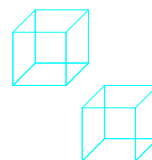
$$a = b = c$$

$$\alpha = \beta = \gamma \neq 90^\circ$$



<http://www.periodni.com>

Copyright © 2016 by Eni Generalic



# SISTEMA CRISTALINO

## triclínico

$$a \neq b \neq c$$

$$\alpha \neq \beta \neq \gamma \neq 90^\circ$$

